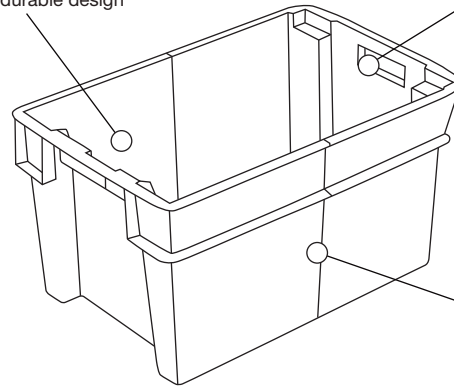




strong and durable design



ergonomic handles for safety and comfort

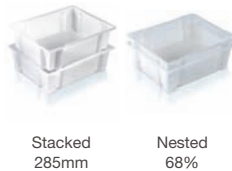
bi-colour for quick identification of stacked and nested positions

Containers that stack and nest through 180° rotation.

○ SN111104

One piece moulded 180° turn stacking and nesting container.
suitable for:

- food processing
- meat products



Stacked
285mm

Nested
68%

Technical specification

Ext.Top Dim.	510 x 400 x 150mm
Int.Base Dim.	410 x 300 x 130mm
Load	90kg on base tray
Capacity	23 litres
Weight	1.1kg
Material	Polypropylene
Colour	Natural



○ SN700601

Stack and nest container. Lid is perforated ref. no. LI151401.
suitable for:

- distribution of 'day old chicks'



Dolly
DO484901



Lid
LI151401



Stacked
235mm

Nested
50%

Technical specification

Ext.Top Dim.	600 x 400 x 120mm
Int.Base Dim.	268 x 362 x 111 x 2 off
Load	82kg on base tray
Capacity	22 litres
Weight	1.2kg
Material	Polypropylene
Colour	Black



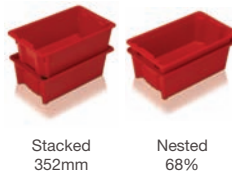
○ SN600004

Stack and nest container by 180° turn method. Fully solid with clean lines.
suitable for:

- parts storage
- food preparation



Dolly
DO484901



Stacked
352mm

Nested
68%

Technical specification

Ext.Top Dim.	595 x 390 x 185mm
Int.Base Dim.	460 x 320 x 160mm
Load	112kg on base tray
Capacity	24 litres
Weight	1.3kg
Material	Polypropylene
Colour	Red



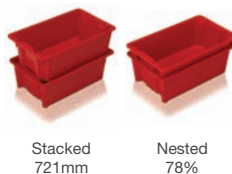
○ SN599004

Double sized stack and nest container by 180° turn method. Fully solid with clean lines.
suitable for:

- handling of textiles



Dolly
DO795904



Stacked
721mm

Nested
78%

Technical specification

Ext.Top Dim.	800 x 597 x 370mm
Int.Base Dim.	650 x 490 x 350mm
Load	192kg on base tray
Capacity	110 litres
Weight	4.6kg
Material	Polypropylene
Colour	Red



○ 11018 / SN101804

Containers securely stack when loaded and nested, by turning through 180°, to save space when not in use. Bi-colour design clearly identifies stacking and nesting positions. Solid sides and base.



Dolly
91005 /
DOJ90501

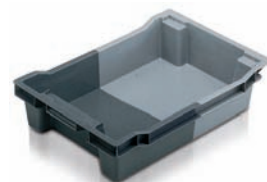
Lid
61046 /
LI104604

Stacked
220mm

Nested
70%

Technical specification

Ext. Dim. 600 x 400 x 117mm
Int. Dim. 458 x 338 x 102mm
Capacity 18 litres
Weight 1.18kg
Material HDPE
Colour Grey/light grey



○ 11020 / SN102001

Containers securely stack when loaded and nested, by turning through 180°, to save space when not in use. Bi-colour design clearly identifies stacking and nesting positions. Ventilated sides and base.



Dolly
91005 /
DOJ90501

Lid
61046 /
LI104604

Stacked
220mm

Nested
70%

Technical specification

Ext. Dim. 600 x 400 x 117mm
Int. Dim. 458 x 338 x 102mm
Capacity 18 litres
Weight 1.09kg
Material HDPE
Colour Grey/light grey



○ 11032 / SN110305

Containers securely stack when loaded and nested, by turning through 180°, to save space when not in use. Bi-colour design clearly identifies stacking and nesting positions. Solid sides and base.



Dolly
91005 /
DOJ90501

Lid
61046 /
LI104604

Stacked
385mm

Nested
70%

Technical specification

Ext. Dim. 600 x 400 x 200mm
Int. Dim. 457 x 338 x 177mm
Capacity 32 litres
Weight 1.84kg
Material HDPE
Colour Grey/light grey,
grey/red



○ 11034 / SN110301

Containers securely stack when loaded and nested, by turning through 180°, to save space when not in use. Bi-colour design clearly identifies stacking and nesting positions. Ventilated sides and base.



Dolly
91005 /
DOJ90501

Lid
61046 /
LI104604

Stacked
385mm

Nested
70%

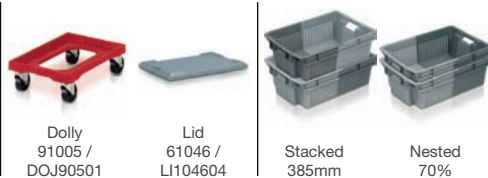
Technical specification

Ext. Dim. 600 x 400 x 200mm
Int. Dim. 457 x 338 x 177mm
Capacity 32 litres
Weight 1.6kg
Material HDPE
Colour Grey/light grey



○ 11035 / SNR13506

Containers securely stack when loaded and nested, by turning through 180°, to save space when not in use. Bi-colour design clearly identifies stacking and nesting positions. Solid base and ventilated sides.



Dolly
91005 /
DOJ90501

Lid
61046 /
LI104604

Stacked
385mm

Nested
70%

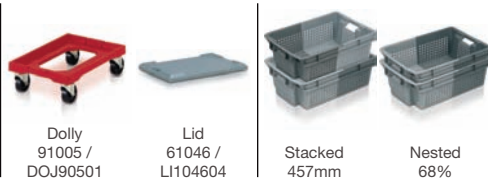
Technical specification

Ext. Dim. 600 x 400 x 200mm
Int. Dim. 457 x 338 x 177mm
Capacity 33 litres
Weight 1.71kg
Material HDPE
Colour Grey/light grey



○ 11037 / SN103701

Containers securely stack when loaded and nested, by turning through 180°, to save space when not in use. Ventilated sides and base.



Dolly
91005 /
DOJ90501

Lid
61046 /
LI104604

Stacked
457mm

Nested
68%

Technical specification

Ext. Dim. 600 x 400 x 236mm
Int. Dim. 460 x 340 x 205mm
Capacity 37 litres
Weight 1.64kg
Material HDPE
Colour Orange



○ 11051 / SN105105

Containers securely stack when loaded and nested, by turning through 180°, to save space when not in use. Bi-colour design clearly identifies stacking and nesting positions. Solid sides and base.



Dolly
91005 /
DOJ90501



Lid
61046 /
LH104604



Stacked
585mm

Nested
70%

Technical specification

Ext. Dim.	600 x 400 x 300mm
Int. Dim.	460 x 340 x 270mm
Capacity	50 litres
Weight	2.3kg
Material	HDPE
Colour	Grey/light grey, grey/red



○ 11053 / SNR15306

Containers securely stack when loaded and nested, by turning through 180°, to save space when not in use. Bi-colour design clearly identifies stacking and nesting positions. Solid base, ventilated sides.



Dolly
91005 /
DOJ90501



Lid
61046 /
LH104604



Stacked
585mm

Nested
70%

Technical specification

Ext. Dim.	600 x 400 x 300mm
Int. Dim.	460 x 340 x 270mm
Capacity	50 litres
Weight	2.27kg
Material	HDPE
Colour	Grey/light grey



○ 11052 / SN105201

Containers securely stack when loaded and nested, by turning through 180°, to save space when not in use. Bi-colour design clearly identifies stacking and nesting positions. Ventilated sides and base.



Dolly
91005 /
DOJ90501



Lid
61046 /
LH104604



Stacked
585mm

Nested
70%

Technical specification

Ext. Dim.	600 x 400 x 300mm
Int. Dim.	460 x 340 x 270mm
Capacity	50 litres
Weight	2.1kg
Material	HDPE
Colour	Grey/light grey



○ 11065 / SN106505

Containers securely stack when loaded and nested, by turning through 180°, to save space when not in use. Bi-colour design clearly identifies stacking and nesting positions. Solid sides and base.



Dolly
91005 /
DOJ90501



Lid
61046 /
LH104604



Stacked
785mm

Nested
70%

Technical specification

Ext. Dim.	600 x 400 x 400mm
Int. Dim.	460 x 340 x 370mm
Capacity	70 litres
Weight	3.06kg
Material	HDPE
Colour	Grey/light grey



○ 11066 / SN106601

Containers securely stack when loaded and nested, by turning through 180°, to save space when not in use. Bi-colour design clearly identifies stacking and nesting positions. Ventilated sides and base.



Dolly
91005 /
DOJ90501



Lid
61046 /
LH104604



Stacked
785mm

Nested
70%

Technical specification

Ext. Dim.	600 x 400 x 400mm
Int. Dim.	460 x 340 x 370mm
Capacity	70 litres
Weight	2.65kg
Material	HDPE
Colour	Grey



○ 11067 / SNR16706

Containers securely stack when loaded and nested, by turning through 180°, to save space when not in use. Bi-colour design clearly identifies stacking and nesting positions. Solid base, ventilated sides.



Dolly
91005 /
DOJ90501



Lid
61046 /
LH104604



Stacked
785mm

Nested
70%

Technical specification

Ext. Dim.	600 x 400 x 400mm
Int. Dim.	460 x 340 x 370mm
Capacity	70 litres
Weight	2.75kg
Material	HDPE
Colour	Grey



○ 12035 / SN203505

Containers stack securely when loaded and nest, by turning through 180°, to save space when not in use.



Stacked
520mm

Nested
70%

Technical specification

Ext. Dim. 500 x 400 x 270mm
Int. Dim. 370 x 340 x 240mm
Capacity 35 litres
Weight 1.8kg
Material HDPE
Colour White



○ 11044 / SN104405

Containers stack securely when loaded and nest, by turning through 180°, to save space when not in use.



Stacked
360mm

Nested
70%

Technical specification

Ext. Dim. 755 x 435 x 190mm
Int. Dim. 680 x 360 x 170mm
Capacity 44 litres
Weight 2.25kg
Material HDPE
Colour Red



○ 11060 / SN106005

Containers stack securely when loaded and nest, by turning through 180°, to save space when not in use.



Stacked
520mm

Nested
70%

Technical specification

Ext. Dim. 800 x 450 x 270mm
Int. Dim. 620 x 370 x 230mm
Capacity 60 litres
Weight 3.68kg
Material HDPE
Colour Grey/red



○ 12070 / SN207005

Containers stack securely when loaded and nest, by turning through 180°, to save space when not in use.



Stacked
564mm

Nested
68%

Technical specification

Ext. Dim. 800 x 450 x 292mm
Int. Dim. 620 x 370 x 257mm
Capacity 66 litres
Weight 4.06kg
Material HDPE
Colour Red



○ 11048 / SN104801

Containers stack securely when loaded and nest, by turning through 180°, to save space when not in use.



Stacked
409mm

Nested
49%

Technical specification

Ext. Dim. 665 x 460 x 212mm
Int. Dim. 625 x 400 x 194mm
Capacity 48 litres
Weight 2.45kg
Material HDPE
Colour Grey



○ 12061 / SN120604

Containers stack securely when loaded and nest, by turning through 180°, to save space when not in use.



Stacked
520mm

Nested
70%

Technical specification

Ext. Dim. 800 x 450 x 270mm
Int. Dim. 620 x 370 x 230mm
Capacity 60 litres
Weight 3.88kg
Material HDPE
Colour White



○ 11075 / SN107505

Containers stack securely when loaded and nest, by turning through 180°, to save space when not in use.

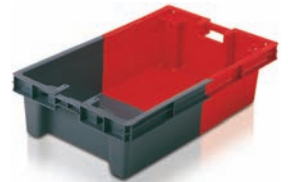


Stacked
450mm

Nested
70%

Technical specification

Ext. Dim. 890 x 560 x 235mm
Int. Dim. 695 x 475 x 200mm
Capacity 75 litres
Weight 4.15kg
Material HDPE
Colour Grey/red



○ 12A30



Stacked
270mm

Nested
46mm

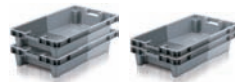
Technical specification

Ext. Dim. 800 x 450 x 150mm
Int. Dim. 620 x 370 x 115mm
Nested Height 46mm
Capacity 30 litres
Weight 2.5kg
Colour Grey/light grey



○ 12A31

With external drainage.



Stacked
270mm

Nested
46mm

Technical specification

Ext. Dim. 800 x 450 x 150mm
Int. Dim. 620 x 370 x 105mm
Nested Height 46mm
Capacity 30 litres
Weight 2.5kg
Colour Grey/light grey



○ 12A32

16 off 10mm Ø drainage holes, subject to minimum quantity.



Stacked
270mm

Nested
46mm

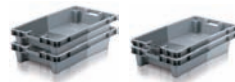
Technical specification

Ext. Dim. 800 x 450 x 150mm
Int. Dim. 620 x 370 x 115mm
Nested Height 46mm
Capacity 30 litres
Weight 2.5kg
Colour Grey/light grey



○ 12041

With external drainage.



Stacked
360mm

Nested
55mm

Technical specification

Ext. Dim. 800 x 450 x 190mm
Int. Dim. 624 x 372 x 155mm
Nested Height 55mm
Capacity 38 litres
Weight 2.6kg
Colour Grey/light grey

