

○ FC643404*

Folding container designed to work with European pallet systems. Interworks with FC465004.

suitable for:

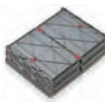
- automotive parts
- electrical goods
- communication products



Dolly
DO484901



Stacked
671mm



Folded
80%

Technical specification

Ext.Top Dim.	600 x 400 x 400mm
Int.Base Dim.	556 x 370 x 325mm
Load Capacity	14kg on base tray
Capacity	67 litres
Weight	3.4kg
Material	Polypropylene
Colour	Grey



○ FC644004* – available without lid FC644104

Concertina crate, the unique tamper evident folding container with special seals which not only secures the lid, but also the sides as well.

suitable for:

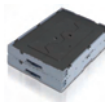
- clothing distribution
- housewares
- toys



Dolly
D0795904



Stacked
788mm



Folded
83%

Technical specification

Ext.Top Dim.	600 x 400 x 400mm
Int.Base Dim.	570 x 370 x 370mm
Load Capacity	150kg on base tray
Capacity	78 litres
Weight	3.6kg
Material	Polypropylene
Colour	Grey



○ FC465004*

Galia folding container designed to work with European pallet systems. Interworks with FC643404.

suitable for:

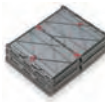
- automotive parts
- electrical goods
- textiles



Dolly
D0795904



Stacked
920mm



Folded
77%

Technical specification

Ext.Top Dim.	800 x 600 x 465mm
Int.Base Dim.	760 x 560 x 420mm
Load Capacity	30kg on base tray
Capacity	178 litres
Weight	7.4kg
Material	Polypropylene
Colour	Grey



○ MF640102

Maxifold container interworks with Maxinest range by use of the swing bars which also act as a locking mechanism when in the stacked position.

suitable for:

- fresh fruit and vegetables
- packaged meat products



Dolly
DO484901



Stacked
378mm



Folded
82%

Technical specification

Ext.Top Dim.	600 x 403 x 193mm
Int.Base Dim.	568 x 362 x 158mm
Load Capacity	162kg on base tray
Capacity	37 litres
Weight	2kg
Material	Polypropylene
Colour	Blue



○ MF640202

Maxifold container interworks with Maxinest range by use of the swing bars which also act as a locking mechanism when in the stacked position.

suitable for:

- fresh fruit and vegetables
- packaged meat products



Dolly
DO484901



Stacked
318mm



Folded
79%

Technical specification

Ext.Top Dim.	600 x 403 x 163mm
Int.Base Dim.	568 x 362 x 138mm
Load Capacity	162kg on base tray
Capacity	29 litres
Weight	1.8kg
Material	Polypropylene
Colour	Black



○ P6423 / FC642304

Folding Galia container approved for the automotive industry.



Dolly
91005 /
DOJ90501



Stacked
414mm



Folded
65%

Technical specification

Ext. Dim.	600 x 400 x 214mm
Int. Dim.	560 x 362 x 194mm
Capacity	39 litres
Weight	2.38kg
Material	HDPE
Colour	Green



○ P6433 / FC643304

Folding Galia container approved for the automotive industry.



Dolly
91005 /
DOJ90501



Stacked
614mm

Folded
76%

Technical specification

Ext. Dim.	600 x 400 x 314mm
Int. Dim.	560 x 362 x 294mm
Capacity	59 litres
Weight	2.96kg
Material	HDPE
Colour	Orange

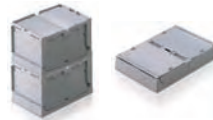


○ FC321804*

Allows maximum utilisation of cube space when in use and space saving when empty.

suitable for:

- automotive and aerospace
- general engineering
- pharmaceutical and retail
- textiles and DIY



Stacked
704mm

Folded
67%

Technical specification

Ext. Top. Dim.	298 x 194 x 182mm
Int. Base. Dim.	261 x 163 x 167mm
Capacity	7 litres
Weight	0.6kg
Colour	Grey



○ FC432204*

Allows maximum utilisation of cube space when in use and space saving when empty.

suitable for:

- automotive and aerospace
- general engineering
- pharmaceutical and retail
- textiles and DIY



Stacked
893mm

Folded
72%

Technical specification

Ext. Top. Dim.	400 x 300 x 230mm
Int. Base. Dim.	357 x 259 x 207mm
Capacity	19 litres
Weight	1.6kg
Colour	Grey

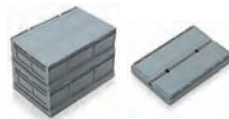


○ FC642204*

Allows maximum utilisation of cube space when in use and space saving when empty.

suitable for:

- automotive and aerospace
- general engineering
- pharmaceutical and retail
- textiles and DIY

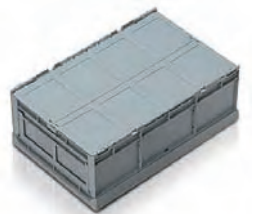


Stacked
885mm

Folded
72%

Technical specification

Ext. Top. Dim.	600 x 400 x 228mm
Int. Base. Dim.	559 x 357 x 207mm
Capacity	41 litres
Weight	2.6kg
Colour	Grey



*Security seals available.